



**ENTREPRENEUR  
& INVESTOR  
LIFE SCIENCE  
SUMMIT 2021**

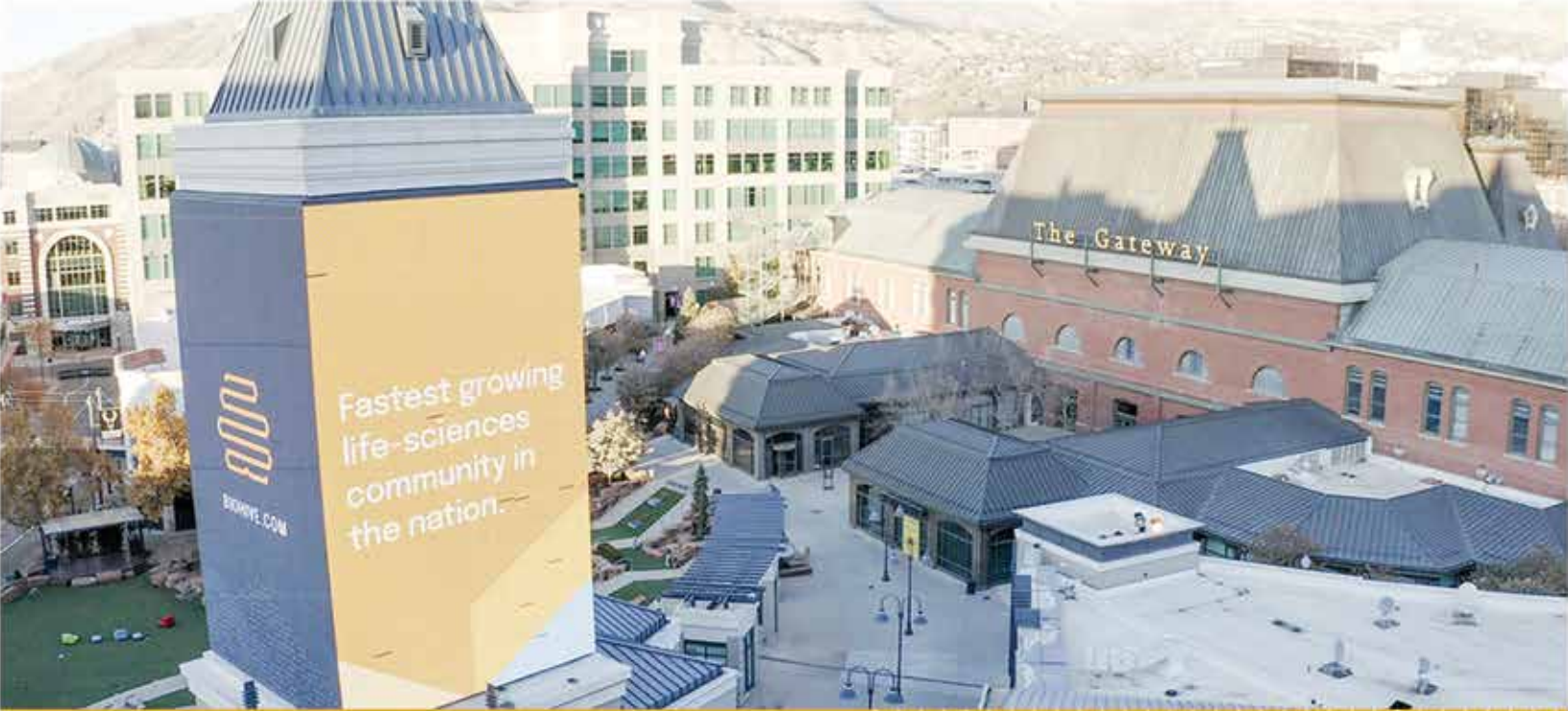
**VIRTUAL**

**INVEST IN THE FUTURE  
OF HEALTHCARE**

**FEBRUARY 25-26, 2021**

PRESENTED BY





**Welcome to the nation's  
fastest-growing life  
science community.**

Join us.

@BioHiveUtah



# WELCOME



## WELCOME TO THE 2021 VIRTUAL ENTREPRENEUR & INVESTOR LIFE SCIENCES SUMMIT

On behalf of BioUtah and the University of Utah's Partners for Innovation, Venture, Outreach and Technology (PIVOT) Center, we welcome you to the 6th annual Entrepreneur & Investor Summit. This conference was originally established to highlight Utah's life sciences companies and to bring together companies seeking investment and investors seeking to invest. We also feature programming designed to help foster the entrepreneurial spirit and educate on practical applications of business development.

Our last Summit in 2020 was held literally two weeks before the coronavirus pandemic caused conferences like ours to be postponed and ultimately moved to virtual formats. While we would all prefer to be meeting in person to better facilitate networking and communication, conditions do not yet permit gatherings of hundreds of people in a setting like our summit. Therefore, we will be hosting this summit virtually this year with every confidence that next year we will be back to meeting in person.

The advantage of our virtual presentation is the ability to have much better participation by panelists and speakers. We believe the slate of panels and speakers this year is the most impressive yet. We hope you will find them informative and motivational. They have much to share based on their experience.

Virtual meetings require a more curated method of networking. The Whova platform we utilize allows communication between participants, including

communicating with panelists and speakers. We encourage you to explore this new method of networking.

This year we solicited applications from companies who had an interest in presenting at the summit. From more than 30 applicants we chose 10 early-stage Utah companies with exciting technologies to present. But it was hard to choose just ten. As a result, we invited all applicants to populate a poster presentation which is essentially a mini-website interested parties can explore to learn more. While not all applicants chose to participate, we have over 25 companies with online presentations that summit attendees can explore.

We express particular appreciation to the sponsors and exhibitors whose funding has helped make this summit possible. We also thank the many investors who have taken time to join us and learn about the robust (or burgeoning) innovative ecosystem in Utah. We are confident this year will be the best Entrepreneur and Investor Summit yet. We thank you for joining us and supporting this exciting endeavor.

Kelvyn Cullimore, Jr.  
President  
BioUtah

Keith Marmer, DPT, MBA  
Chief Innovation and Economic Engagement Officer  
University of Utah

# SPONSORS

## TITLE SPONSOR



## SESSION/TRACK SPONSORS



OPENING



PITCH



ENTREPRENEUR



FINANCE

## SUPPORTING SPONSORS



## CONTRIBUTING SPONSORS



THE SHOP



## PIVOT CENTER PLATINUM SPONSORS



## PIVOT CENTER GOLD SPONSORS



# LOGIN & JOIN WEBINAR

## INSTRUCTIONS FOR JOINING WEBINAR

### ACCESSING THE WEBINAR

You may join the webinar via either the desktop or web app.

#### 1. DESKTOP

Visit [eilfsciencessummit.org](http://eilfsciencessummit.org) and click on the “Join Now” button. You’ll need to use the email address you registered with. If you are asked for an event invitation code when accessing the event, use **bioutaheilss**. The webinar platform is most compatible with Google Chrome. You may experience performance issues using any other browser.

#### 2. MOBILE APP

The **Whova** mobile app functions as a companion to the desktop version and may be accessed via the App Store or Google Play. You may also access it at [https://whova.com/portal/eilss1\\_202103/](https://whova.com/portal/eilss1_202103/). Once installed, click “Find My Event/Conference” and search for “Utah Life Sciences Summit.” You’ll then need to login using the email listed on your registration.

### VIEWING WEBINAR SESSIONS

Webinar sessions are viewable in either the desktop version or mobile app via the “Agenda.” You may add sessions you wish to attend to your schedule and view any session in progress. **Each session has its own link within the “Agenda.”** The live stream of sessions will not be continuous in the same window, so to go from one session to the next, you will need to click on each session in the “Agenda” you wish to view.

### SUPPORT

If you have any problems with your registration or accessing the webinar, please contact BioUtah’s tech support at 801.867.4061 or [EILSS2021@bioutah.org](mailto:EILSS2021@bioutah.org).



Your goals,  
your terms,  
our promise.

Experience how client service  
sets us apart.

Whatever you want to accomplish with your wealth—whatever enduring mark you want to make on the world for yourself, for your family, or for others—the J.P. Morgan Private Bank team in Salt Lake City is here to help you get there.

Named 2021's "Best Private Bank in the World" and "Best Private Bank in North America" by *Global Finance* magazine.

Helping you plan, invest, borrow and bank for today, tomorrow and beyond.

#### CONTACT US

**Ryan McMahon**

ryan.mcmahon@jpmorgan.com

801.715.7314

[jpmorgan.com/Utah](https://www.jpmorgan.com/Utah)

**J.P.Morgan**  
Private Bank

INVESTMENT PRODUCTS: • NOT FDIC INSURED • NO BANK GUARANTEE • MAY LOSE VALUE

# AGENDA — DAY 1

THURSDAY, FEBRUARY 25, 2021

SPONSORED BY

**J.P.Morgan**

## OPENING SESSION

- 9:00 AM WELCOME AND OPENING REMARKS**  
KELVYN CULLIMORE, PRESIDENT & CEO, BIOUTAH; KEITH MARMER, CHIEF INNOVATION AND ECONOMIC ENGAGEMENT OFFICER, UNIVERSITY OF UTAH
- 9:15 AM BIOHIVE: BRANDING OUR INDUSTRY**  
KATELIN ROBERTS, EXECUTIVE DIRECTOR, BIOHIVE
- 9:30 AM IN SEARCH OF FUNDING: A CEO PERSPECTIVE**  
**MODERATOR:** JARED BAUER, IONIQ SCIENCES  
**PANELISTS:** DAVID BEARSS, THERAPEUTICS ACCELERATOR, U OF U; LIBBLE GINSTER, FLUIDX; MYLES GREENBERG, ALUCENT BIOMEDICAL; JAMES MCCULLOUGH, RENALYTIX AI; ELIZABETH WAGNER, CONSTANT THERAPEUTICS
- 10:30 AM CHANGES IN VENTURE CAPITAL FUNDING**  
**MODERATOR:** JENNY BARBA, BIOVENTURES INVESTORS  
**PANELISTS:** AMY BELT RAIMUNDO, KAISER PERMANENTE VENTURES; PARTH DESAI, FLARE CAPITAL; ANULAY JAYASURIYA, EXCLAIM CAPITAL; JASON LETTMAN, LIGHTSTONE VENTURES
- 11:30 AM STATE OF THE MARKET**  
MONICA DICENSO, HEAD OF GLOBAL INVESTMENT OPPORTUNITIES GROUP, JP MORGAN

SPONSORED BY

 **TANNER**  
Accountants & Advisors

## FINANCE TRACK

- 1:00 PM WHAT IS A SPAC AND HOW DO THEY WORK?**  
**MODERATOR:** DAVID DOBKIN, LIFE SCI CAPITAL  
**PANELISTS:** MIKE BELLIN, PWC; ROB ETHERINGTON, CLENE NANOMEDICINE; BEN JAMES, KIRKLAND & ELLIS
- 2:00 PM INVESTING IN EARLY-STAGE LIFE SCIENCE COMPANIES**  
**MODERATOR:** MATT BRESNAHAN, WILSON SONSINI  
**PANELISTS:** MATTHEW COHEN, OSAGE UNIVERSITY PARTNERS; PAUL CONLEY, GENERAL INCEPTION; GAY COOKSON, LSI; KURT SHELIN, ECHO HEALTH VENTURES
- 3:00 PM FINDING FUNDING IN UTAH**  
**MODERATOR:** LISA DUNLEA, VITA CAPITAL PARTNERS  
**PANELISTS:** MARY CARDON, SBIR CENTER; JUNE CHEN, MOUNTAIN PACIFIC VENTURE; TIM COOLEY, PARK CITY ANGELS; MIKE PHILLIPS, INTERMOUNTAIN VENTURES

# AGENDA – DAY 2

FRIDAY, FEBRUARY 26, 2021

SPONSORED BY



SPONSORED BY



## ENTREPRENEUR TRACK

- 9:00 AM UTAH INCUBATORS/ACCELERATORS**  
**MODERATOR:** KEITH MARMER, UNIVERSITY OF UTAH  
**PARTICIPANTS:**
1. DAVID BEARSS, U OF U THERAPEUTICS ACCELERATOR
  2. CHANDANA HAQUE, ALTITUDE LAB
  3. CLARK CAHOON, SALT LAKE CITY BIOTECH INITIATIVE
  4. ALAN MATHESON, POINT OF THE MOUNTAIN LAND AUTHORITY
- 10:00 AM UTAH'S UNIVERSITIES: WHERE TECHNOLOGY IS DISCOVERED**  
**MODERATOR:** PAUL LAIKIND, GVM BIOBUSINESS  
**PARTICIPANTS:**
1. KEITH MARMER, UNIVERSITY OF UTAH
  2. MIKE ALDER, BRIGHAM YOUNG UNIVERSITY
  3. CHRISTIAN IVERSON, UTAH STATE UNIVERSITY
- 11:00 AM ATTRACTING INVESTMENT – BEGIN WITH THE EXIT IN MIND**  
**MODERATOR:** ODED BEN JOSEPH, OUTCOME CAPITAL  
**PANELISTS:** BOB CAREY, ACELYRIN; ANDY RASDAL, OBALON THERAPEUTICS; TOM SCULLY, WELSH CARSON ANDERSON & STOWE

## PITCH TRACK

- 8:00 AM OPENING COMMENTARIES**
- 8:10 AM INHERENT BIOSCIENCES**
- 8:30 AM 3HELIX**
- 8:50 AM MAGELLAN BIOANALYTICS**
- 9:10 AM NEXEOS BIO**
- 9:30 AM BACKDROP HEALTH, INC.**
- 9:50 AM FLUIDX MEDICAL TECHNOLOGY**
- 10:10 AM EPURINES, INC**
- 10:30 AM PEEL THERAPEUTICS, INC.**
- 10:50 AM REBEL MEDICINE**
- 11:10 AM KNOWN MEDICINE**
- 11:30 AM BIOHIVE VIDEO**
- 11:45 AM QUICK TIPS ON IP FOR STARTUPS**
- 12:00 PM WINNERS ANNOUNCED**

## AFTERNOON TRACK

**1:00 - 4:00 PM MEET UPS AND PRESENTATIONS**



# PARTICIPANTS



## MIKE ALDER

DIRECTOR, TECHNOLOGY TRANSFER, BRIGHAM YOUNG UNIVERSITY | [PANELIST](#)

Mike has been the Director of the Technology Transfer Office at BYU for 14 years. He also serves currently as a member of the investment committee for KickStart Seed Venture Fund. Previously he headed a boutique venture accelerator called Emerging Technology Partners in Birmingham, Alabama where he was also a managing partner of Redmont Venture Partners. He has been the founder or cofounder of 16 technology-based businesses in Utah and Alabama.



## CHRIS BADGER

PARTNER, NOW CFO | [SPONSOR, JUDGE](#)

Chris is a hard driving senior accounting professional who brings a broad and diverse industry experience to the firm. He has extensive expertise in Financial Reporting, Due Diligence, Strategic Management along with experience in Human Resources, Health Insurance Benefits and Retirement Plans.

Chris has been a Certified Public Accountant since 1997, and has also done over 25 years of professional accounting work. His areas of expertise include financial reporting, financial operations, financial management, audit preparation, general management, benefits, due diligence and transaction

prep, tax prep, and reporting for income taxes. Chris is very knowledgeable with ERP systems, and has implemented Oracle Upgrades and Great Plains.



## JENNY BARBA

VENTURE PARTNER AND PRINCIPAL, BIOVENTURES INVESTORS | [MODERATOR](#)

Jenny Barba joined BioVentures Investors as a Venture Partner and Principal in 2017. Jenny brings 20 years of strategic and financial advisory experience from her work with venture backed and growth companies in the medical device sector. Prior to BioVentures, Jenny was a Consultant with Sirius International Insurance Group, Ltd, where she specialized in alternative investments, including venture capital, private equity and direct investments. Prior to Sirius, Jenny was Vice President, Healthcare Investment Banking at Piper Jaffray & Co. where she successfully executed financings and mergers and acquisitions for public and private medical device companies totaling over \$4 billion in over twenty transactions.



## JARED BAUER

CEO, IONIQ SCIENCES | [MODERATOR](#)

Jared Bauer is the CEO of both Cibus Biotechnologies Inc. (point-of-care diagnostics), and IONIQ Sciences (early stage cancer testing). Mr. Bauer also serves

as the Chairman of the BioUtah SLC Biotech Initiative Advisory Committee where he is leading an effort to brand the Utah Life Science community and expand its global reach, and as a trustee for The Oliver Fund, a non-profit he co-founded. In 2012, Mr. Bauer founded Exuro Medical and acquired BurnFree Products. In just two years with a focus on sustainable revenue generation, he led the Exuro Medical team to expand BurnFree distribution to 58 countries, managing regulatory processes, re-working quality systems and making BurnFree the second largest burn treatment product line in the world, Recently Mr. Bauer also served as an adjunct professor of entrepreneurship at the LDS Business College.



**MIKE BELLIN**

DEALS PARTNER, PWC | **PANELIST**

Mike advises clients on accessing the debt and equity capital markets, by providing clients with technical/ project management advice on complex accounting and financial reporting issues associated with the SEC registration process, IPO's, SPAC mergers, 144A debt and equity offerings, divestitures, spin-offs and carve-outs, and GAAP conversions. As a seasoned deal adviser, Mike has served as the lead advisor on numerous IPO's, SPAC mergers, spin-offs, carve outs, GAAP conversions and other capital markets/ complex accounting transactions.



**DAVID BEARSS**

CEO, U OF U THERAPEUTICS ACCELERATOR | **PANELIST**

Dave graduated with a PhD in Cell and Structural Biology from the University of Texas. He went on to found Montigen Pharmaceuticals in 2003 which sold to SuperGen in 2006. After working as the Chief Scientific Officer for SuperGen, Dave started The Center for Investigational Therapeutics and worked as an associate professor at The Huntsman Cancer Institute and The Department of Oncological Sciences. Dave co-founded Tolero Pharmaceuticals in 2011. He currently serves as Senior Managing Director of University of Utah Therapeutics Accelerator Hub. Dave's career also includes teaching positions with the University of Arizona, Salt Lake Community College, University of Utah and Brigham Young University.



SUPPORTING BIOUTAH  
AND UTAH'S LIFE  
SCIENCE COMMUNITY



Accountants & Advisors

801.532.7444 | tannerco.com



**ODED BEN-JOSEPH**

MANAGING DIRECTOR, OUTCOME CAPITAL |  
MODERATOR

Dr. Ben-Joseph is a Co-Founder and Managing Director at Outcome Capital, a highly specialized life science advisory and investment banking firm. He brings a unique combination of executive, entrepreneurial, scientific and transactional experience and is passionate about assisting cutting-edge life sciences companies in enhancing their strategic value and developing a path to successful liquidity. He graduated from Imperial College and received his Ph.D. from the University of Cambridge and MBA from the University of Bradford.



**MATT BRESNAHAN**

PARTNER, WILSON SONSINI | MODERATOR

Matt Bresnahan is a partner in the San Diego and Los Angeles offices of Wilson Sonsini Goodrich & Rosati, where he has focused his practice for more than a decade on establishing and building biotech companies. Matt is primary outside IP counsel to more than 75 life sciences companies within the pharmaceutical, biologics, molecular biology, diagnostic, and medical device fields in Southern California.



**CLARK CAHOON**

TECHNOLOGY & INNOVATION ADVISOR, SALT LAKE CITY CORPORATION DEPARTMENT OF ECONOMIC DEVELOPMENT | SPONSOR, PANELIST

Clark is the Technology & Innovation Advisor at Salt Lake City's Department of Economic Development, working to enact Mayor Mendenhall's Healthcare Innovation Initiative. Prior to this position Clark was Governor Herbert's Life Science sector lead, where he drove strategic initiatives, published industry reports, supported corporate recruitment efforts, and worked with startups to connect them to vital resources that help put Utah on the map as a biotech and innovation hub. He spends his free time camping and hiking through Utah's mountains and deserts, playing basketball or reading a good book.



**MARY CARDON**

UTAH GOVERNOR'S OFFICE OF ECONOMIC DEVELOPMENT | PANELIST

Mary Cardon leads the Utah SBIR Center team. Since 2008, the Center has assisted Utah's technology companies on all aspects of SBIR-STTR grants with a better than 25% success rate for grants they assist with, nearly twice the national average.

Mary worked in management and communications, with over 25 years in newspapers and small business in Idaho, California and Utah. She is active in the community, volunteering with organizations improving the lives of women, children and the under-represented.



**BOB CAREY**

PRESIDENT, ACELYRIN, INC. | [PANELIST](#)

After a successful 30-year career in investment banking and the biopharma industry, Robert F. Carey co-founded ACELYRIN to give back to patients through the identification, development and commercialization of transformative therapeutics. For Bob it isn't just about the numbers, he is committed to helping people by using the personal wealth he created to enable meaningful philanthropy to give back to patients, society and his community. Bob's career spans management, corporate strategy, mergers and acquisitions (M&A) advisory and capital-raising for biotech and pharmaceutical companies. Having begun his career when the biotech industry was relatively young, he developed a deep understanding of the industry's value chain and became an expert in capital allocation, acquisition strategy, financing, and investor relations.



**JUNE CHEN**

MANAGING PARTNER, MOUNTAIN PACIFIC VENTURE PARTNERS | [PANELIST](#)

As Managing Partner of Mountain Pacific Venture Partners, June leads diligence on portfolio companies. June is also Managing Partner of Lead Dog Development, a life sciences venture studio dedicated to helping early-stage companies access the resources, space and expertise needed to accelerate commercialization. June earned her A.B. cum laude in English & American Literature and Language from Harvard College, and her M.D. from Duke School of Medicine. She completed an internship in Internal Medicine from Yale-New Haven Hospital in New Haven, Connecticut.



**MATTHEW COHEN**

PARTNER, OSAGE UNIVERSITY PARTNERS | [PANELIST](#)

Matt is a Partner at Osage University Partners (OUP) where he has focused on Life Science investments since 2013. He has led OUP's investments in Arrakis Therapeutics, Biohaven Pharma, Capella Bioscience, Kura Oncology, PMV Pharma, Synthorx, and others. He currently sits on the boards of Coho Therapeutics and IMMvention Pharmaceuticals. Prior to joining OUP, Matt was a strategy consultant with L.E.K. Consulting serving clients in biopharma and private equity. Matt holds a Ph.D. in Cell and Molecular Biology from The University of Pennsylvania, and a B.S. in Microbiology from The Pennsylvania State University.



**PAUL CONLEY**

CEO, GENERAL INCEPTION | [PANELIST](#)

Paul is the founder of General Inception, a deep-tech venture studio based in Silicon Valley and Boston. Since 2007 he has been a Managing Partner or Venture Partner to OMX Ventures, Genoa Ventures, Paladin Capital Group and Vertical Venture Partners, all in Seed/Series A stage investments in the software, semiconductor and life sciences. His current focus includes formation and seed stage investment at the intersection of physics, data science and biology.

# LIFE SCIENCES IN SLC

We are leading through crisis, together. Salt Lake City is building a world-class Healthcare Innovation Center -- intentional space for more incubator, office, and wet lab locations where startups can grow and scale with ease. For more information reach out to Technology and Innovation Advisor Clark Cahoon at [clark.cahoon@slcgov.com](mailto:clark.cahoon@slcgov.com) or visit [slc.gov/ed](http://slc.gov/ed).



# 1

FIRST IN NATION  
FOR ACADEMIC  
LIFE SCIENCES  
R&D GROWTH

# 2

SECOND IN NATION  
FOR MEDICAL DEVICE  
EMPLOYMENT  
CONCENTRATION

# FIND A NEW PATH



“The life sciences industry is critical to fueling healthcare innovations, which will, in turn, strengthen our public health and local economy.”

—Salt Lake City Mayor Erin Mendenhall



DEPARTMENT of  
ECONOMIC DEVELOPMENT

# SLC.GOV/ED



**RYAN CONNELL**

ATTORNEY, SCHWEGMAN LUNDBERG WOESSNER | SPONSOR, MC OF PITCH TRACK

Ryan J. Connell is a registered patent attorney practicing intellectual property law with an emphasis on chemical engineering, materials science, biotechnology, and organic chemistry. Ryan also has experience in a variety of mechanical and electro-mechanical related arts. Ryan received his B.S. in biochemistry/molecular biology and his B.A. in chemistry from the University of Minnesota Duluth (2009) and his M.S. in organic chemistry from the University of Minnesota Duluth (2011). Ryan received his J.D. from the University of Minnesota (2014), magna cum laude.



**TIM COOLEY**

DIRECTOR, PARK CITY ANGELS, PARTNER, VIACAP | PANELIST

Tim Cooley is the Executive Manager for Park City Angels and a Partner at ViaCap. Tim has helped 100s of companies raise more than \$200 Million in Seed Stage funding. Tim is the author of his #1 ranked book *The Pitch Deck Book: How To Present Your Business And Secure Investors and Find Your Killer Idea*. Tim has a passion for helping entrepreneurs present their businesses to investors and growing companies.



**GAY COOKSON**

VP, ECONOMIC DEVELOPMENT & SOCIAL IMPACT LSI | PANELIST

Ms. Cookson draws on over 25 years of experience in leadership positions at the University of Utah and state government. Prior to joining LSI, Ms. Cookson was the Director of Research and Science at the University of Utah where she facilitated capacity-building programs to catalyze research. Ms. Cookson served in the executive branch of the State of Utah as Director of the Division of Arts and Museums and in the Department of Heritage and Arts. Prior to her roles at the State, Ms. Cookson worked at the University of Utah developing capital campaigns, private philanthropy, and public funding. Gay received her bachelor's and master's degrees from the University of Utah and is currently pursuing a Ph.D. in Educational Leadership and Policy with an emphasis on higher education.



**KELVYN CULLIMORE**

PRESIDENT & CEO, BIOUTAH | HOST, SPEAKER, MODERATOR

Kelvyn served for 25 years as president and CEO of Dynatronics Corporation, a publicly traded medical device manufacturer. Currently, he serves on the company's board of directors. Kelvyn served on the board of the Medical Device Manufacturers Association in Washington D.C. and on the board of trustees for the Utah Technology Council. From 2004 to 2017, he served as the first mayor of Cottonwood Heights.



**PETE DEININGER**

FOUNDER & PRINCIPAL, ALTIVIST CONSULTING |  
**JUDGE**

Pete formed Altivist Consulting in 2019 to help developing companies chart their growth journeys and prepare for investor engagement. He brings over 25 years' experience as a professional investor, most recently managing an \$8 billion portfolio of growth equities. Pete also serves as a Mentor in Residence with the Partners for Innovation, Ventures, Outreach & Technology (PIVOT) Center at the University of Utah and is a board member of the Park City Angels.



**PARTH DESAI**

PRINCIPAL, FLARE CAPITAL | **PANELIST**

Parth is a Principal at Flare Capital Partners, focused on investing in early stage healthcare technology and services companies. Since joining Flare Capital, Parth has helped lead and/or support investments in Bright Health, Cohere Health, Suki and UnifiHealth. Prior to joining Flare Capital, Parth was an investor at NewYork-Presbyterian Hospital. Parth was also previously a health care strategy consultant at Deloitte Consulting, and began his career as health policy analyst for the Massachusetts House of Representatives. Parth earned his B.S. in Biology from Boston College, MPH in Health Policy and Management from Boston University School of Public Health and Masters in Medicine from Boston University School of Medicine.

## SCHWEGMAN IS A PROUD SPONSOR OF THE BIOUTAH E&I SUMMIT

---

Schwegman is a vibrant and innovative law firm dedicated exclusively to the practice of intellectual property law. Our 120+ intellectual property attorneys serve a roster of clients that includes startups, universities, multinational corporations, middle-market businesses, and individuals in matters spanning the entire technical spectrum including those relating to digital healthcare, biotechnology, pharmaceuticals, and medical technology.



**MONICA DICENSO**

HEAD OF GLOBAL INVESTMENT OPPORTUNITIES GROUP, J.P. MORGAN PRIVATE BANK | **SPEAKER**  
Monica DiCenso is a managing director and head of global investment opportunities (GIO) group at J.P. Morgan. Prior to joining GIO in 2015, Monica was the head of U.S. Equity Strategy at J.P. Morgan Global Wealth Management where she managed a team of strategists and served as a key resource for clients by identifying equity ideas, including thematic brokerage ideas, options trades and structured investments as well as identifying single stock selections for our U.S. Opportunistic, Core and High Dividend Stock lists.



**DAVID DOBKINS**

CFO, LIFESCI ACQUISITION II. MANAGING DIRECTOR, LIFESCI CAPITAL, LIFESCI ACQUISITION, LIFESCI CAPITAL | **MODERATOR**  
David Dobkin is an experienced healthcare capital markets investment banker with a career focused on helping high-growth life science, medical device, and healthcare IT companies achieve their financial and strategic goals. David has worked with companies developing a wide range of technologies and brings extensive strategic advisory and execution capability to his clients. David has experience with both traditional and non-traditional forms of equity and debt offerings in both the U.S. and abroad. He is a regular speaker on growth capital formation at conferences across the United States and Canada.



# Your Pathway to Partnerships

**BIO ONE-ON-ONE PARTNERING™** is the most cost-effective, efficient way to make valuable connections in the biotech and pharma industry without traveling the world. Communicate directly with prospective biotech investors and senior business and scientific management executives attending BIO's portfolio of events.

[bio.org/events](http://bio.org/events) →

**BIO is setting the partnering agenda in a semi-virtual BD world...JOIN US.**

ONCOLOGY: <b>March 2-5</b>	2021
IMMUNOLOGY: <b>March 9-12</b>	2021
<b>BIO 2021</b>	<b>June 10-18 2021</b>



BIO members receive discounts on registration, company presentations, and exhibition fees at all of our conferences and events.





**LISA DUNLEA**

CEO, FOUNDER, DIRECTOR, XABLECATH, INC. |  
MODERATOR, JUDGE

Lisa Dunlea has over 25 years of life science operating and investment experience, as an executive at VC funded companies and a VC investor serving on numerous boards. She is currently XableCath's CEO. Her experience includes fund raising, sale and marketing, R&D, clinical trials, and managing investments to liquidity. Previously, she was an aerospace engineer. Lisa was a Kauffman Fellow, has an M.S. in Engineering from FIU, and M.B.A from Wharton.



**ROB ETHERINGTON**

CEO/PRESIDENT, CLENE NANOMEDICINE |  
PANELIST

Mr. Etherington is the CEO of Clene, Inc (NASDAQ: CLNN). Clene is a platform company leading the way in drug nanotherapeutics, with multiple Phase 2 and one Phase 3 registration study presently underway in the field of neurodegenerative disease (ALS, Multiple Sclerosis, Parkinson's). Rob has privately raised over \$160M (over \$146M in equity and over \$18M in grant/indirect support) for Clene, and took Clene public on the NASDAQ in late 2020. Before joining Clene as its founding CEO in 2013, Mr. Etherington worked for Actelion Pharmaceuticals, which was the largest biopharmaceutical company based in the EU until Johnson & Johnson Pharmaceuticals acquired the company in 2017.

Less bro culture,  
more cell culture.

@BioHiveUtah





**LIBBLE GINSTER**

PRESIDENT & CEO, FLUIDIX MEDICAL TECHNOLOGY | **PANELIST**

Libble is the President & CEO of Fluidx Medical Technology. Fluidx is an early-stage med tech company focused on developing innovative embolic materials and other technologies. Prior to Fluidx, her experiences span marketing, product development, finance, strategy consulting, and M&A at both early stage companies and leading firms (BD/CR Bard, Merck, Ernst & Young, Lehman Brothers). Libble holds an MBA and Bachelors in Engineering from Duke University.



**MYLES GREENBERG**

CEO/PRESIDENT, ALUCENT BIOMEDICAL, INC. | **PANELIST**

Dr. Myles Greenberg comes to Alucent Biomedical with more than 20 years of experience in growing healthcare, medical technology and life sciences firms as an entrepreneur, operating executive, board member, clinician and investor. Prior to joining Alucent, he served as chief development officer at IntegraMed America, a private equity backed healthcare services firm. Previously, Dr. Greenberg spent most of his career as an early-stage venture capital investor with CHL Medical Partners, HealthInvest Equity Partners and Pappas Ventures.



**CHANDANA HAQUE**

EXECUTIVE DIRECTOR, ALTITUDE LAB | **PANELIST**

Chandana Haque is a product strategist with over a decade of experience operating life science startups. Chandana earned her B.S. at Carnegie Mellon and her MBA from UC Berkeley—Haas School of Business where she focused her graduate work in strategic finance and innovation. While earning her degree, she worked in venture capital and researched novel approaches to innovation. Chandana has developed a passion for coaching founders and an appreciation for the systemic challenges underrepresented founders face.



**Governor's Office of  
Economic Development**

BUSINESS • TOURISM • FILM



**CHRISTIAN IVERSON**

DIRECTOR, TECHNOLOGY TRANSFER SERVICES  
UTAH STATE UNIVERSITY , TECHNOLOGY TRANSFER  
SERVICES | **PANELIST**

Christian Iverson has over 15 years of experience in life science research, development, and commercialization. Prior to joining Utah State University in 2012, he was co-founder of Quansys Biosciences and was a R&D project manager at the Spendlove Research Foundation where he led the multiplex development of antibodies for the Q-Plex Technology which was licensed to Quansys Biosciences. He earned his undergraduate degrees in biology and business as well as his MBA from Utah State University.



**BEN JAMES**

PARTNER, KIRKLAND & ELLIS LLP | **PANELIST**

Ben James is a Registered Foreign Lawyer in the Hong Kong office and also a partner in Kirkland & Ellis LLP (U.S.). Ben focuses on corporate and securities law matters, including US equity and debt registered offerings, special purpose acquisition companies (SPACs), Rule 144A/Regulation S equity and debt offerings, private placements and H share offerings. He has experience in advising issuers and underwriters in capital markets transactions, as well as in advising public and private companies and financial institutions in mergers and acquisitions and financing transactions.

**SOME OF THE GREATEST IDEAS START HERE.**

Celebrating our 10th Anniversary, Maschoff Brennan provides legal counsel and representation to some of the world's most innovative companies. With over 45 attorneys and offices in the technology-focused regions of Utah and California, our attorneys are known for having the breadth of experience and the forward-thinking insight needed to handle complex technological and business issues across all industries and geographic boundaries. We look forward to many more years of meeting new litigation and intellectual property-related challenges and continuing to represent our clients with the dedication and creativity they have come to expect.



**801.297.1850 | MABR.COM**

SALT LAKE CITY | PARK CITY | IRVINE | LOS ANGELES

**PROTECTING YOUR IDEAS  
AND YOUR BUSINESS.**



**ANULAY JAYASURIYA**

FOUNDER AND MANAGING DIRECTOR, EXXCLAIM CAPITAL | **PANELIST**

Anula has been investing in life sciences and health care since 2001 and has more recently focused on Women’s Health. She combines successful investment expertise and industry operating experience together with scientific and medical knowledge. Prior to venture capital Anula held senior positions in Pharma and Biotech. Anula received her AB, summa cum laude, MD, PhD, and MBA, all from Harvard University. She also has a M. Phil degree in pharmacology from the University of Cambridge, UK.



**PAUL LAIKIND**

PRINCIPAL, GVM BIOBUSINESS | **MODERATOR**

Dr. Laikind. has over 35 years of leadership experience in the biotechnology industry. He most recently served as President, CEO and board member of ViaCyte, Inc. a leading regenerative medicine company. A serial entrepreneur, Dr. Laikind co-founded and held top executive and board positions at three San Diego companies that each went public before ultimately being acquired. Just prior to joining ViaCyte, Dr. Laikind served as CBO at the Sanford-Burnham Medical Research Institute where he successfully worked to enhance the institutes translational capabilities. Dr. Laikind holds Ph.D. in biochemistry from the University of California, San Diego.



**THE SHOP**

CREATIVITY CONNECTED



**SALT LAKE CITY’S MOST CREATIVE WORKSPACE**

- FLEXIBLE MEMBERSHIPS
- SHARED & PRIVATE SPACE AVAILABLE
- BENEFITS, PERKS & PROGRAMMING

**NOW PRE-LEASING, CONTACT US TODAY**

**SHOPWORKSPACE.COM**

340 E 400 S, Salt Lake City, UT 84111

infoslc@shopworkspace.com | 801.980.2660





**JASON LETTMAN**

GENERAL PARTNER, LIGHTSTONE VENTURES |  
PANELIST

Jason Lettman is a General Partner of Lightstone Ventures and focuses on investments in the biopharmaceutical and medical technology sectors. Jason brings 20 years of operating and venture experience in the life sciences and also is a General Partner at Morgenthaler Ventures. He currently serves on the Board of Directors of ALX Oncology (NASDAQ: ALXO), Atsena Therapeutics, Carrick Therapeutics, Cerevance, FIRE1, Relivant Medsystems, and Second Genome. Jason led the firm’s investments and served as a Director of Ra Pharmaceuticals (acquired by UCB) and Vapotherm (NASDAQ: VAPO). Jason also served as the interim CEO of Promedior and led the company through its sale to Roche in 2020.



**KEITH MARMER**

CHIEF INNOVATION AND ECONOMIC  
ENGAGEMENT OFFICER, UNIVERSITY OF UTAH |  
SPEAKER, PANELIST

Keith’s strong leadership skills come from 30 years of experience as an inventor, entrepreneur and investor. Overseeing operations for TVC, Keith’s passion for innovation has helped countless ideas get the momentum they need to succeed. He has three patents, launched four companies, and helped entrepreneurs raise more than \$500 million in investment capital. An avid skier, hiker and traveler, he has visited almost all 50 states, and more than forty countries.



**WORLD TRADE CENTER®  
UTAH**

# MAKING UTAH THE CROSSROADS OF THE WORLD

## ONE BUSINESS AT A TIME

During each phase of your business's global expansion, World Trade Center Utah is here to assist. Our Global Business Services provide tailored consulting to develop and execute your expansion plans – both in growing your global sales and raising capital. Our Investment Services provide expert advice on your business plans using the CrowdSmart expert network platform and connecting you with potential investors from around the world. WTC Utah also provides grants to help you grow your business globally.

LEARN HOW WE CAN HELP YOU COMPETE AND WIN GLOBALLY AT [WTCUTAH.COM](http://WTCUTAH.COM)



**ALAN MATHESON**

EXECUTIVE DIRECTOR, POINT OF THE MOUNTAIN STATE LAND AUTHORITY | **PANELIST**

Alan Matheson oversees planning and development of The Point — 700 acres of state-owned land near Point of the Mountain, one of the premier economic development opportunities in Utah’s history. Matheson previously served as Executive Director of the Utah Department of Environmental Quality, Senior Environmental Policy Advisor to Governor Herbert, State Planning Coordinator, and Executive Director of Envision Utah. Matheson holds an A.B. from Stanford University and a J.D. from the UCLA School of Law.



**RICARDO MORAN**

PARTNER, SCHWEGMAN, LUNDBERG & WOESSNER | **JUDGE**

Ricardo Moran heads up the life sciences practice at the Schwegman firm. Ricardo is a registered patent attorney practicing intellectual property law with an emphasis on pharmaceuticals, medical devices, and materials science.



**MIKE PHILLIPS**

INTERMOUNTAIN VENTURES MANAGING PARTNER AND DIRECTOR, INTERMOUNTAIN HEALTHCARE | **PANELIST**

Managing Partner and Director Intermountain Ventures, Mike Phillips directs business development and venture investment for the Intermountain Venture Fund. The fund seeks to bring new technology and businesses to Intermountain Healthcare from both internal and external sources to improve the lives and health of our caregivers and patients. Previously, Dr. Phillips served as the Chief of Outreach and Clinical Services at Intermountain Healthcare supporting outreach, Telehealth, and clinical shared service design and deployment.



**JAMES MCCULLOUGH**

CEO, RENALYTIXAI | **PANELIST**

James is Renalytix AI’s Chief Executive Officer, with primary focus on strategic planning and execution, as well as coordination with key stakeholders.

James has leadership experience building emerging technology companies. He was most recently chief executive officer of Exosome Diagnostics, which has recently been acquired by Bio-Techne Corporation (NASDAQ: TECH). James is also a managing partner of Renwick Capital, LLC. James received his B.A. from Boston University and an M.B.A. from Columbia Business School. James is currently Chairman of BalletNext.



**AMY BELT RAIMUNDO**

VP & MANAGING DIRECTOR, KAISER PERMANENTE VENTURES | **PANELIST**

Amy Belt Raimundo joined Kaiser Permanente Ventures as managing director. Amy brings over 20 years of experience in healthcare investing, start-up and corporate operations and hospital system consulting. Immediately prior to joining Kaiser, Amy was the Chief Business Officer of digital health start-up Evidation Health founded by GE Ventures and Stanford Healthcare where she led all commercial and business development activities. Previously, Amy spent close to a decade in venture capital focused on healthcare technology as a Vice President at Covidien Ventures and Advanced Technology Ventures (ATV). She led investments in Medina Medical (acquired by Medtronic) and Nevro Corporation (NYSE: NVRO) among others.



**ANDY RASDAL**

INTERIM CEO, OBALON THERAPEUTICS | **PANELIST**

Currently interim CEO Obalon Therapeutics, Inc (OBLN), founding CEO DexCom, Inc (DXCM), President Medtronic Vascular (MDT), Vice President Global Marketing Arterial Vascular Engineering (AVEI).



# CLIMATE DEV

SOFTWARE ENGINEERING

Custom Software

App Development

Data Solutions

Process Control

Lean Six Sigma

Data Analytics

[climatedev.com](http://climatedev.com)





**KATELIN ROBERTS**

EXECUTIVE DIRECTOR, BIOUTAH | SPONSOR, PEAKER, JUDGE

Katelin has management and operations experience within various industries including; aerospace, food manufacturing, and technology. Although Katelin has managed large corporate departments with 130+ people and \$86M annually, her passion lies in contributing to the growth and success of small companies that aspire to affect change in the world and improve patient healthcare. In her downtime, you can find Katelin spending time with her family or fly fishing on local waters.



**TOM SCULLY**

GENERAL PARTNER, WELSH CARSON ANDERSON & STOWE | PANELIST

Tom Scully is a General Partner with Welsh, Carson, Anderson & Stowe, a private equity firm in New York, which is the most active US PE investor in healthcare. Tom joined the firm in 2004. Mr. Scully was the Administrator of the Centers for Medicare & Medicaid Services (CMS), from 2001 to 2004. CMS administers Medicare, Medicaid, SCHIP, and is the largest agency in the U.S. Government, controlling more than \$1.4 trillion a year. At CMS, Mr. Scully had an instrumental role in designing and passing Medicare Part D and Medicare Advantage legislation. He initiated the first public reporting and disclosure for comparative quality among hospitals, nursing homes, home health agencies and dialysis centers.

RENALYTIX AI

**Transaction Experts**



Utilizing a NOW CFO consultant as part of your transaction team will bring your business:

- Success
- Additional Capital
- Higher Return
- Faster Close Process

Our Transaction Experts will ensure you have the correct systems and processes in place, including:

- Mergers and Acquisitions Support
- Audit Preparation
- Transaction and Prep for Sale
- Sale Side Due Diligence
- Prepare Data Warehouse

CALL US FOR YOUR TRANSACTION NEEDS

CONTACT US

Chris Badger

801.598.9390

cbadger@nowcfo.com







**KURT SHELINE**

PRINCIPAL, STRATEGIC INVESTMENT, ECHO HEALTH VENTURES | **PANELIST**

Kurt Sheline supports Echo Health Ventures in all aspects of the investment process, from deal sourcing and evaluation through transaction management and execution. He is responsible for providing financial and market support that drives investment initiatives and decisions, and the success and growth of Echo’s portfolio of companies. Kurt currently serves as a director on the board of Springbuk and Eleanor Health. He is a board observer for Octave Bioscience, GNS Healthcare, Quartet Health, and Circulation. Before joining Echo Health Ventures in 2017, Kurt was a Vice President in Cascadia Capital’s Healthcare Technology and Services group, based in Seattle, where he worked closely with management teams in the life sciences, healthcare technology, and

health care services industries, providing business development, positioning, sales & marketing, and transaction advisory and execution services.



**ELIZABETH WAGNER**

COO, CONSTANT THERAPEUTICS | **PANELIST**

Miss Wagner served as VP Corporate Development for 4 years before becoming COO in 2015. She has over 18 years experience in the biopharmaceutical industry, including clinical research at Genzyme Corporation, portfolio management at Genentech, and business development at Cubist Pharmaceuticals. Miss Wagner received her BS from the University of Notre Dame, her MA from Boston University Medical School, and her MS and MBA from the Massachusetts Institute of Technology.



**CAMBIA GROVE**

**Join us to transform health care.**

Cambia Grove looks forward to working with Utah communities to advance innovation.

[www.cambiagrove.com](http://www.cambiagrove.com)

We are proud to sponsor the BioUtah Entrepreneur & Investor Life Sciences Summit



**Stoel Rives** LLP

STOEL RIVES IS A PROUD SPONSOR OF THE

**Entrepreneur & Investor Life Science Summit**

[www.stoel.com](http://www.stoel.com) | [@stoel](https://twitter.com/stoel)

# PARTICIPATING COMPANIES



ANDY OLSON  
[inherentbio.com](http://inherentbio.com)

Inherent Biosciences is a molecular diagnostics company at the intersection of epigenetics and AI.

## 3HELIX

MIKE KIRKNESS  
3Helix is an early stage diagnostic company focused on developing prognostic tests for fibrotic diseases, especially NASH and liver fibrosis.



MARC HANSEN  
[mag-bio.com](http://mag-bio.com)

Magellan performs unbiased proteomics analysis at the largest data scale in the industry. Our proteomics database can be mined to customize cancer treatments and stratify patient populations.



THERESA MANSI  
[nexeosbio.com](http://nexeosbio.com)

NexEos Bio is focused on the treatment, life-long management, and diagnosis of patients living with chronic, eosinophil-mediated inflammatory diseases with a high unmet medical need.



JERRY RUDISIN  
[backdrophealth.com](http://backdrophealth.com)

Backdrop has created a novel software platform that gets the maximum predictive power from any set of electronic medical records.



LIBBLE GINSTER  
[fluidxmedical.com](http://fluidxmedical.com)

Fluidx Medical Technology is a clinical-stage company focused on a novel embolic device called GPX.



BRETT DAVIS  
[rebelmedicine.com](http://rebelmedicine.com)

Rebel Medicine is a preclinical-stage company developing non-opioid solutions for acute pain management.



JOSHUA SCHIFFMAN  
[peeltx.com](http://peeltx.com)

PEEL Therapeutics, Inc. is an emerging biotech company that delivers evolution-inspired medicines to improve patient lives.



DR. BK KISHORE  
[epurines.com](http://epurines.com)

ePurines, Inc is a drug development startup focused on innovative purinergic signaling- based therapies for obesity, metabolic syndrome, and kidney and liver diseases.



ANDREA MAZZOCCHI, PH.D  
[knownmed.com](http://knownmed.com)

Known Medicine helps clinicians pick the best cancer treatment for patients, faster. We do so by breaking down a patient's tumor into many micro-tumors and treat each with different drugs.

## OTHER COMPANIES

UVERTEK, INC.  
XENOCOR  
BRAVEHEART WIRELESS  
COREA THERAPEUTICS  
DIXIE STATE UNIVERSITY  
JSK THERAPEUTICS  
MAJELCO MEDICAL, INC.  
MICROSURGICAL INNOVATIONS

OXYSWITCH  
PHOENIX PHARMALABS INC.  
PIVOT EMBO THERAPY  
STREAM DX, INC.  
SYMBIOCELLTECH  
THROUGH THE CORDS LLC  
VIBE WELLNESS, LLC  
ZYLO THERAPEUTICS

# EXHIBITORS

VISIT THE VIRTUAL BOOTH OF THE EXHIBITORS LISTED BELOW TO WIN VISA GIFT CARDS VALUED AT \$100, \$50, AND \$25.



# ELITE MEMBERS

## PLATINUM MEMBERS



## GOLD MEMBERS

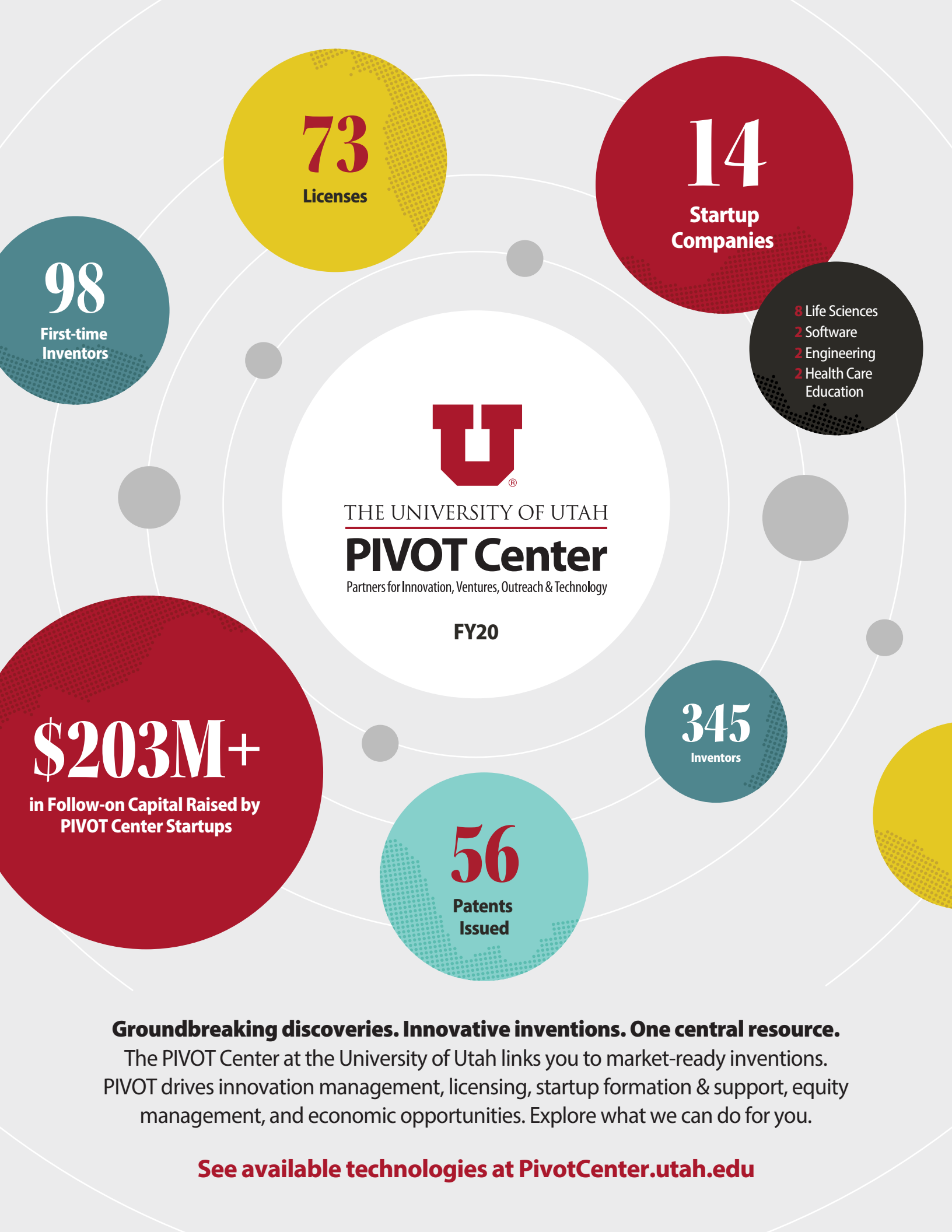


## SILVER MEMBERS



## BRONZE MEMBERS





98

First-time  
Inventors

73

Licenses

14

Startup  
Companies

- 8 Life Sciences
- 2 Software
- 2 Engineering
- 2 Health Care  
Education



THE UNIVERSITY OF UTAH

**PIVOT Center**

Partners for Innovation, Ventures, Outreach & Technology

FY20

\$203M+

in Follow-on Capital Raised by  
PIVOT Center Startups

345

Inventors

56

Patents  
Issued

**Groundbreaking discoveries. Innovative inventions. One central resource.**

The PIVOT Center at the University of Utah links you to market-ready inventions. PIVOT drives innovation management, licensing, startup formation & support, equity management, and economic opportunities. Explore what we can do for you.

**See available technologies at [PivotCenter.utah.edu](http://PivotCenter.utah.edu)**